

System controllers

CTD01 - mini controller USB



Description

One BUS connection
 Supply 200mA at 13.8V
 Built-in thermal protection
 (When connecting the modules, polarity is not important)
 On average about 12-15 modules can be connected to the bus.
 USB port through which the controller can be connected to a computer
 2GB SD Card (that stores system configuration and can log system events)

Ref. No.

678989

CTD01E - mini controller USB & ethernet



Same specifications as CTD01 controller
 Additional ethernet port with webserver

678990

CTD01E+ - mini controller USB & ethernet



Same specifications as CTD01E controller
 Extended supply 400mA at 13.8V
 On average about 30 modules can be connected to the bus.

679841

CTD02 - full controller



Two BUS connections
 Supply 500mA at 13.8V per BUS, 1000mA in total
 Built-in thermal protection
 (When connecting the modules, polarity is not important)
 On average 70 modules can be connected to CTD02 (about 35 per BUS).
 USB port through which the controller can be connected to a computer
 2GB SD Card (that stores system configuration and can log system events)

678991

CTD02E - full controller USB & ethernet



Same specifications as CTD02 controller
 Additional ethernet port with webserver

678992



WARNING

Read the complete manuals before carrying out any installation or activating the system.

Universal load actuators

REL04 - relay module



Description

Ref. No.

DIN-rail module suitable for switching four devices.
 4 potential-free NO contacts, each can handle a max of 16A at 230V (cosφ=1)
 Each can be allocated an individual function by means of the software

The module can handle all switching functions⁽¹⁾:
 mono-stable (bell), bi-stable (on/off), timer, interval, thermostat output, etc.

679008

ROL02 - shutter module



DIN-rail module, suitable for switching⁽¹⁾ 2 shutters / blinds / curtains.
 2X2 potential-free NO contacts, each can connect 16A at 230V (cosφ=1)
 The second contact can only give power output when the first output is not activated. Thus avoiding mutual signals on UP1 (/UP2) and DN1 (/DN2) when activating the 2 outputs at the same time.

679009

REL08 - relay module



DIN-rail module, suitable for switching⁽¹⁾ eight devices.
 8 potential-free CO contacts, each can handle a max of 16A at 230V (cosφ=1)
 Each can be allocated an individual function by means of the software

The module can handle all switching functions:
 mono-stable (bell), bi-stable (on/off), timer, interval, thermostat output, etc.

679010

(1) For heavy inductive loads (multiple fluorescent lights) with a high capacity or bipolar applications, modular contactors need to be added. The relay module contact will then activate the coil of the contactor.

Modular contactors - Contax: see the full range of contactors in Residential components catalogue

Input modules

INP08 - 8-channel input module



Description

Ref. No.

DIN-rail mount module for connecting external contacts such as solar/wind detector, motion detector, door switches and push buttons. Eight potential free isolated inputs are provided. The input contacts can be selected and set using the System Manager software:

- Push button = button is open when inactive (e.g. doorbell).
- Normal open = contact is open when inactive.
- Normal closed = contact is closed when inactive.
- Switch = single-pole conventional switch.

679014

The maximum length of each input is 200 meters. The cable type or its section is irrelevant.

INP16 - 16-channel input module



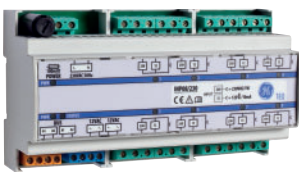
DIN-rail mount module for connecting external contacts such as solar/wind detector, motion detector, door switches and push buttons. Sixteen potential free isolated inputs are provided. The input contacts can be selected and set using the System Manager software:

- Push button = button is open when inactive (e.g. doorbell).
- Normal open = contact is open when inactive.
- Normal closed = contact is closed when inactive.
- Switch = single-pole conventional switch.

679015

The maximum length of each input is 200 meters. The cable type or its section is irrelevant.

INP08/230 - 8-channel input module with potential (Vac/Vdc)



DIN-rail module for connecting external contacts such as solar/wind detector, motion detector, door switches and push buttons. There are 8 optically insulated inputs. Each input needs a voltage to be active. This can be:

- 12Vac/dc if connected between B and C (consumption approximately 10mA).
- 230Vac if connected between A and C (consumption approximately 1W).

679016

If there are inputs with potential-free contacts they can be connected to the module via 12Vac. The required voltage is provided on the top and bottom sides of the input module.

The input contacts can be selected and set using the System Manager software:

- Push button = button that is open when inactive (e.g. doorbell).
- Normal open = contact that is open when inactive.
- Normal closed = contact that is closed when inactive.
- Switch = single pole conventional switch.

The maximum length for each input is 200 meters. The cable type or its section is irrelevant.

Input modules for any switch interface

The INP02/04 is a miniature yet versatile input module that offers the flexibility to interface any push-button switches to the HabiTEQ automation system. The size of the modules enables the mounting of the module in most of the current switch boxes.



INP02/04 - input modules

	Description	Ref. No.
	2-channel input module⁽¹⁾ 4-channel input module	678996 679013
	<p>Module for connecting regular switch. Or external contacts such as detectors, door switches, magnetic contacts for doors or windows, etc.</p> <p>The input contacts can be selected and set using the PC software:</p> <ul style="list-style-type: none"> - Push button = button is open when inactive (e.g. doorbell). - Normal open = contact is open when inactive. - Normal closed = contact is closed when inactive. - Switch = single pole conventional switch. <p>4-LED connections, which can be used to indicate the status of each input.</p>	

(1) on request

Lighting control

DIM500 - dimmer module + line filter

	<p>DIN-rail module, suitable for dimming 4 loads of 40-500VA (refer de-rating curve for higher temp). The dimmers operate digitally with 8-bit precision. An optical separation between the inputs and outputs guarantees safe operation.</p> <p>Each dimmer output is fused internally with a 4AF fuse. Ensure adequate ventilation in the fuse box. A 2P MCB of maximum 16A must be placed on the mains power.</p>	679942
--	--	---------------

ANA04 - analogue dimmer module

	<p>DIN-rail module, suitable for controlling four analog dimmers operating with input voltages of 0-10V or 1-10V (can be selected via HabiTEQ System Manager software). The control contains four digital-analogue converters with 8-bit precision.</p> <p>An optical separation between the inputs and outputs guarantees safe operation. This module can be used for dimming very large capacities.</p>	679017
--	---	---------------

ANR04 - analogue dimmer module

	<p>DIN-rail module, suitable for controlling four analog dimmers operating with input voltages of 0-10V or 1-10V (can be selected via HabiTEQ System Manager software). The control contains four digital-analogue converters with 8-bit precision.</p> <p>An optical separation between the inputs and outputs guarantees safe operation. This module can be used for dimming very large capacities.</p> <p>Each analogue output controls a relay contact, which releases when the output is on 0. This contact can disrupt the mains voltage so that the fluorescent lamps go out completely</p>	679018
--	--	---------------

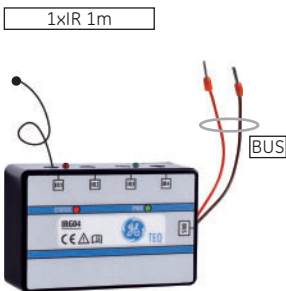
Communication interfaces

SMS01 - SMS module



Description	Ref. No.
<p>Mobile phone interface module DIN-rail mounted 230Vac module. Enables control and monitoring of the system via simple text messages.</p> <p>Any SIM card from local GSM service provider, with the PIN REQUEST DEACTIVATED can be inserted into the SIM card holder</p> <p>Features:</p> <ul style="list-style-type: none"> • Max. 8 phone numbers can access system • Max. 96 channels can be activated • Confirmation messages to selected phone numbers • Messages and values can be defined (e.g. ON- OFF - 0 - 1 - 50%...) • Maximum 16 different alarm messages <p><i>(Antenna & cable included)</i></p>	678988

IRG04 - infrared generator



<p>The IRG04 module is able to generate any IR code and transmit it to any device. This module makes it possible to control infrared operated devices such as a DVD player, music system, and shutters, aircon fan coil, TV. Each module has 4 different outputs, which can all send 16 different IR-codes.</p> <p>The required infrared codes need to be entered in the HabiTEQ™ SDB database by sampling them through an infrared switch with 4 buttons (SWC04I/MI) or a thermostat infrared display (THI01). The codes are stored in a non volatile memory.</p> <p>The IRG04 has 4 low power IR LED outputs. The IR LED attached to the included cables (2m) must be mounted immediately in front of the controlled device.</p> <p>All infrared codes can be sent using a SWC04I/MI, THI01, infrared remote control, TSC5.8".</p> <p>Includes 1-IR LED emitter with 1m cable.</p>	679101
--	--------

Sensors - Motion and Light

MDI01 - Motion & lights sensor - indoor



Description	Ref. No.
<p>Wall or ceiling mount module that can detect motion & light. The detector is integrated in a built-in frame with claw attachment and is connected to the HabiTEQ bus (no polarity). The motion detector has a range of approximately 7m at an angle of 110 degrees.</p> <p>The System Manager software allows you determine whether the output is a combination of motion AND light or only motion or only light⁽¹⁾.</p>	
White	679084
Black	679092
Metallic	679100

(1) Light dependent: Control of lighting in shop windows, offices, car parking areas, sunblinds, shutters, or even lighting in a home.
 Features: User presettable switch light intensity, intensity range and hysteresis (to avoid on/off instable behaviour). Reaction time is also user presettable. 1 channel, 2 channels and 1 channel with incorporated digital time switch with week-cycle, all with separate photocell are available besides a 1 channel all-in-one device.
 Function: Electronic switch controlled by the intensity of the ambient light, detected by a separate or integrated photocell (depending on the model). When the light intensity drops below the threshold setting, the switch changes its state to the on position. An increasing ambient light intensity eventually will switch off the device again.

Light Sensitive Switches - GALAX LSS: see the full range of contactors in Residential components catalogue

System visualization

THI01 - 2-line control panel



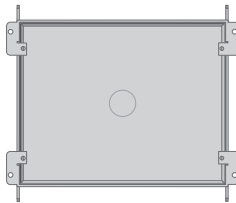
Description	Ref. No.
Wall mount system control panel with a 2 line 16-character LCD display. Menu driven display controlled by 4 push buttons on the front. The module has the following functions in addition to control of upto 96 output channels. - Thermostat with built-in temperature sensor - Infrared receiver to control upto 99 outputs/scenes with any universal infrared remote control.	
Metallic frame	679039
White frame	679021
Black frame	679022

TSC5.8 - monochrome touch screen



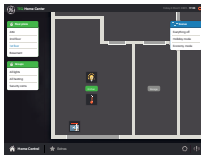
Display module with an illuminated LCD touch screen for mounting inside the wall. - User-friendly menu allows operating 96 outputs and viewing their status. - Choice between 6 main menus and a random number of outputs can be programmed under each main menu. - Up to 8 outputs can be operated per screen (=submenu). - Built-in temperature sensor for thermostats function.	679102
--	--------

TSCBOX



Box for monochrome touch screen. For mounting the TSC5.8 into the wall.	679103
--	--------

TEQHC - Home Center



HMI software The GE home center software runs on any Windows XP, XP Embedded or Vista PC and allows control and visualizes a HabiTEQ installation in an intuitive and user-friendly manner. The customer can easily add floor plans or groups and allocate outputs to certain rooms. Standard IP-cameras that support the mjpeg format can easily be connected to the GE Home Center	678995
---	--------

TCPC / NAV10.2 - Third party panel PC



On request the GE TEQ center can be provided pre-installed on a touch panel PC hosting Win-XP . The PC comes with power supply.	
Frame grey metal	678997
Frame black	679918
Frame white	679919
Flush mounted box system	679917

WPAD - Third party tablet PC



Black	679846
On request the GE TEQ Center can be provided pre-installed on a tablet PC hosting Windows 7 (Windows 8 starting 2013) The PC comes with AC Adapter Charger.	

Smart switch - Niko® design

Comfort simplified

Lights on

One switch not only allows you to control 8 lights individually. It also allows you to do so much more like dimming lights, delayed disconnect, controlling light atmospheres, running lights, shutters, ...

Universal infrared receiver

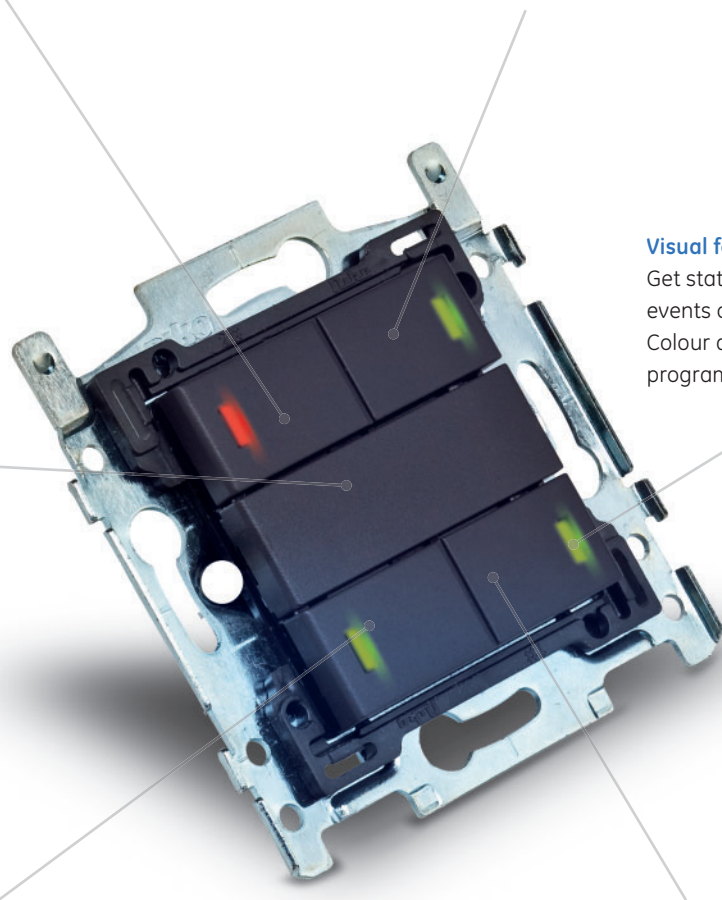
All infrared commands are immediately forwarded to the central unit via the switch.

Light measurement

Fully adjustable, the switch measures the ambient light.

Visual feedback

Get status feedback of different events on the BUS through LED's. Colour and brightness of LED programmable through software.



Design

The smart switch is available in Niko® design.

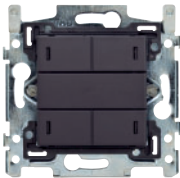
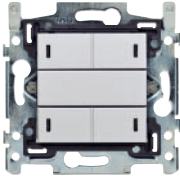
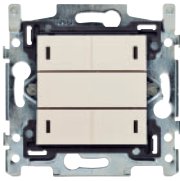
Digital temperature measurement

The switch senses the temperature and issues the right commands to the central unit to e.g. activate the airconditioning or the heating.

Specifications	
Power supply	BUS powered
BUS load	8 mA at nominal 13.8V
Dimensions	HxW = 71x73mm

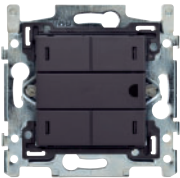
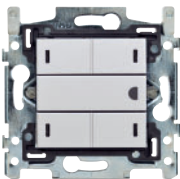
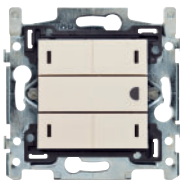
Smart switch

SWC04 - 4-button smart switch



Description	Ref. No.
<ul style="list-style-type: none"> • Available in 4 standard colours⁽¹⁾ • Further options upon request • Cover plate to be ordered separately⁽²⁾ <p>A 4 push-button electronic smart switch with 4 RGB LED integrated into a Niko® built-in frame with claw attachment. A BUS connection with connector (no polarity) is provided and supplies the power and control of the module.</p> <p>One push-button can operate 1 output, 2 scenes (short or long push) and up to 16 scenes.</p> <p>Simultaneous press on any of two keys enables entry into second page, where 4 more outputs are available. So in total upto 8 outputs can be controlled through this module.</p> <p>Each of the 4-LED gives feedback according to the status of the corresponding output. The colour and the brightness can be set via the software.</p>	
White colour	679023
Cream colour	679077
Sterling colour	679085
Anthracite colour	679093

SWC04T - 4-button smart switch with thermostat



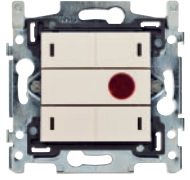
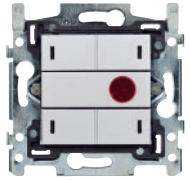
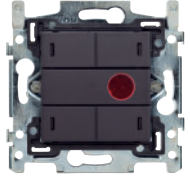

Description	Ref. No.
<ul style="list-style-type: none"> • Available in 4 standard colours⁽¹⁾ • Further options upon request • Cover plate to be ordered separately⁽²⁾ <p>In addition to functionality of a standard 4-button switch this version of the smart switch also host thermostat functionality, including built-in temperature sensor.</p> <p>Five different programs:</p> <ul style="list-style-type: none"> - Manual - Freeze - Economy - Comfort - Night <p>Can be activated through the keys. Each program has its own temperature setting that can be set in the HabiTEQ System Manager. The LED and the appropriate colour are used to indicate the present program running, which is also settable in the HabiTEQ System Manager.</p>	
White colour	679027
Cream colour	679079
Sterling colour	679087
Anthracite colour	679095

(1) Other colour options on request. Lead times apply.
 (2) Cover plates are not part of the switch, see page 41.

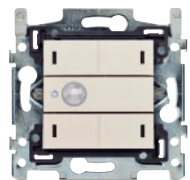
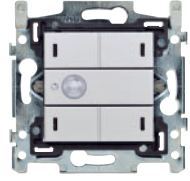
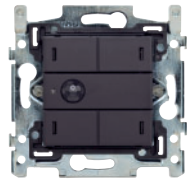



Smart switch (continued)

SWC04I - 4-button smart switch with Infrared receiver

	Description	Ref. No.
	<ul style="list-style-type: none"> • Available in 4 standard colours⁽¹⁾ • Further options upon request • Cover plate to be ordered separately⁽²⁾ <p>In addition to functionality of a standard 4-button switch this version of the smart switch also hosts an Infrared receiver.</p> <p>It can control upto 12 outputs/scenes with a universal infrared remote control. The first 4 infrared codes are always used for the function of the 4 push-buttons. The other 8 channels can be assigned to any other output.</p> <p>The infrared codes can be sampled taught with this switch or they can be downloaded from the database.</p>	
		
		
		
	White colour	679026
	Cream colour	679078
	Sterling colour	679086
	Anthracite colour	679094

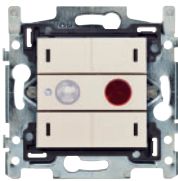
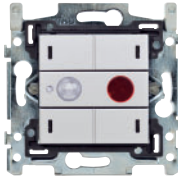
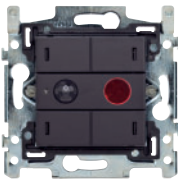
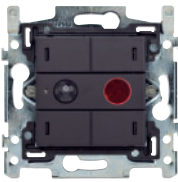
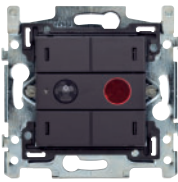
SWC04M - 4-button smart switch with motion sensor

	Description	Ref. No.
	<ul style="list-style-type: none"> • Available in 4 standard colours⁽¹⁾ • Further options upon request • Cover plate to be ordered separately⁽²⁾ <p>In addition to functionality of a standard 4-button smart switch SWC04, this module contains a motion detector with an integrated light cell.</p> <p>The range is approximately 7m at an angle of 110 degrees. The light cell is assembled next to the detector.</p> <p>The motion detector is automatically linked to the function of push-button 1.</p> <p>The HabiTEQ System Manager allows you to determine the priority between push button 1 and the detector. At the same time you can indicate the level of movement at which the detector needs to detect together with the light level.</p>	
		
		
		
	White colour	679028
	Cream colour	679080
	Sterling colour	679088
	Anthracite colour	679096

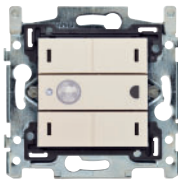
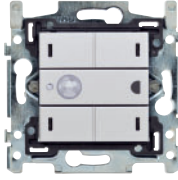
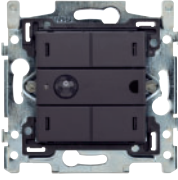
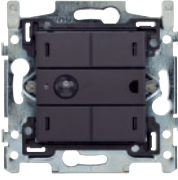
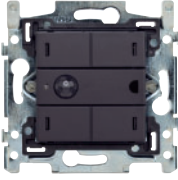
(1) Other colour options on request. Lead times apply.
 (2) Cover plates are not part of the switch, see page 41.

Smart switch (continued)

SWC04MI - 4-button smart switch with motion sensor & infrared receiver

	Description	Ref. No.	
	<ul style="list-style-type: none"> • Available in 4 standard colours⁽¹⁾ • Further options upon request • Cover plate to be ordered separately⁽²⁾ <p>In addition to functionality of a standard 4-button smart switch SWC04, this module contains a motion detector with an integrated light cell and an infrared receiver.</p>		
		White colour	679035
		Cream colour	679081
		Sterling colour	679089
		Anthracite colour	679097

SWC04MT - 4-button smart switch with motion sensor & thermostat

	Description	Ref. No.	
	<ul style="list-style-type: none"> • Available in 4 standard colours⁽¹⁾ • Further options upon request • Cover plate to be ordered separately⁽²⁾ <p>In addition to functionality of a standard 4-button smart switch SWC04, this module contains a motion detector with an integrated light cell and a thermostat with built-in temperature sensor.</p>		
		White colour	679030
		Cream colour	679082
		Sterling colour	679090
		Anthracite colour	679098

(1) Other colour options on request. Lead times apply.
 (2) Cover plates are not part of the switch, see page 41.

Smart switch - frame types

Niko® ORIGINAL - Flush surround plates

	Colour	Pack	Ref. No.	Niko-code
	Cream ⁽¹⁾	10	679920	100-76100
	White ⁽²⁾	10	679921	101-76100
	White 2 modules	10	679853	101-76200
	White 3 modules	10	679854	101-76300
	Light grey ⁽³⁾	10	679922	102-76100
	Silver ⁽⁴⁾	10	679923	103-76100
	Greige ⁽⁵⁾	10	679924	104-76100

Niko® INTENSE - Flush surround plates




	White ⁽¹⁾	1	679925	120-76100
	White 2 modules	1	679849	120-76200
	White 3 modules	1	679851	120-76300
	Sterling ⁽²⁾	1	679926	121-76100
	Anthracite ⁽³⁾	1	679927	122-76100
	Anthracite 2 modules	1	679850	122-76200
	Anthracite 3 modules	1	679852	122-76300
	Bronze ⁽⁴⁾	1	679928	123-76100
	Dark brown ⁽⁵⁾	1	679929	124-76100
	Azure ⁽⁶⁾	1	679930	125-76100
	Silver ⁽⁷⁾	1	679931	127-76100
	Dark silver ⁽⁸⁾	1	679932	128-76100
Gold ⁽⁹⁾	1	679933	129-76100	

Niko® PURE - Simple flush surround plates

	Stainless steel for anthracite ⁽¹⁾	1	679934	150-76100
	Natural red ⁽²⁾	1	679935	152-76100
	Natural white ⁽³⁾	1	679936	151-76100
	Bamboo ⁽⁴⁾	1	679938	156-76100
	Alu black ⁽⁵⁾	1	679940	158-76100
	Alu grey ⁽⁶⁾	1	679937	155-76100
	Champagne steel ⁽⁷⁾	1	679939	157-76100
	Stainless steel for white ⁽⁸⁾	1	679941	250-76100






Passive infrared sensors

Compatible sensor range from GE Security (now UTC Fire & Security)

	Description	Ref. No.
	<p>General purpose passive infrared sensors that can operate stand-alone or be linked to the system via an input module. The sensors need a separate power supply (9-24V).</p> <p>EV100 Sensor with settable range of 5 or 10m</p> <ul style="list-style-type: none"> • Angle of view 86° with 5 curtains • Adjustable field of view with mounting bracket SB01 • NC contact 	679943
	<p>EV100-PI Pet immune version (the sensor is immune to movement of a pet up to 20kg)</p>	679944
	<p>EV1012⁽¹⁾ Volumetric sensor with range 12m</p> <ul style="list-style-type: none"> • Angle of view 86° with 9 curtains • NC contact when energized 	679946
	<p>EV1012PI⁽¹⁾ Pet immune version (the sensor is immune to movement of a pet up to 15kg)</p>	679947
	<p>EV525P Sensor with settable range of 25 or 16m</p> <ul style="list-style-type: none"> • Angle of view 89° (volumetric) with 9 curtains • Adjustable field of view with mounting bracket SB01 • NC contact when energized 	679948
	<p>EV669 Ceiling mounted sensor - 10m range</p> <ul style="list-style-type: none"> • Angle of view settable to 180 or 360° with 18 curtains • NC contact, voltage free relay 	679949


(1) Please consult us.

Dual detector based sensors

	Description	Ref. No.
	<p>Sensors with dual detection technology, combining Infrared and microwave detection to provide high quality precise detection. The sensors need a separate power supply (9-24V).</p> <ul style="list-style-type: none"> • To be linked on input module <p>DD100</p> <ul style="list-style-type: none"> • 10m range • Angle of view 86° with 5 curtains • NC contact • Adjustable field of view with mounting bracket SB01 <p>DD100PI Pet immune version (the sensor is immune to movement of a pet up to 20kg)</p>	<p>679952</p> <p>679953</p>
	<p>DD105 Volumetric sensor with settable range 7 or 12m</p> <ul style="list-style-type: none"> • Angle of view 86° with 7 curtains • The sensors is immune to movement of a pet up to 20kg • NC contact when energized. 	<p>679954</p>
	<p>DD669⁽¹⁾ Ceiling mounted sensor</p> <ul style="list-style-type: none"> • Angle of view 360° with 18curtains • Adjustable range 12 or 20m • NC contact, voltage free relay 	<p>679955</p>
	<p>SB01 Wall or ceiling mount bracket for EV and DD Series</p>	<p>679998</p>
	<p>360FM Ceiling mount bracket for EV669 and DD669 sensors</p>	<p>679999</p>

Order codes

Outdoor passive infrared detector

	Description	Ref. No.
	<p>The sensors need a separate power supply (9-24V).</p> <ul style="list-style-type: none"> • To be linked on input module <p>DI601 Stand-alone external sensor -10/20/30m - 33/66/98ft selectable</p> <ul style="list-style-type: none"> • Electronic range setting: 10/20/30m • 10 to 70° detection angle • 180° pan & 90° tilt for flexible install • High dust and humidity resistance (IP65) 	<p>679951</p>

(1) Please consult us.






Door and window contacts

	Description	Ref. No.
	<p>The contacts have to be linked on input modules</p> <p>DC101 Surface mount window-door contact, wired</p> <ul style="list-style-type: none"> • 15mm standard operating gap • White colour • NC contact 	679968
	<p>DC101B Surface mount window-door contact, wired</p> <ul style="list-style-type: none"> • 15mm standard operating gap • Black colour • NC contact 	679969
	<p>DC102 Surface mount window-door contact with screw terminals</p> <ul style="list-style-type: none"> • 18mm standard operating gap • White colour • NC contact 	679970
	<p>DC102B Surface mount window-door contact with screw terminals</p> <ul style="list-style-type: none"> • 18mm standard operating gap • Black colour • NC contact 	679971
	<p>DC123 Surface mount window-door contact with screw terminals</p> <ul style="list-style-type: none"> • 18mm standard operating gap • CO contact 	679972
	<p>DC137 Surface mount window-door contact with screw terminals</p> <ul style="list-style-type: none"> • 37mm wide operating gap • NC contact 	679973
	<p>DC141 Surface mount window-door miniature contact, self-adhesive, wired</p> <ul style="list-style-type: none"> • 25mm standard operating gap • NC contact 	679974
	<p>DC108S1 Surface mount overhead floor mount contact, wired - armored cable</p> <ul style="list-style-type: none"> • 75mm standard operating gap • NC contact 	679975
	<p>DC106 Recessed mount contact wired, flanged housing</p> <ul style="list-style-type: none"> • 12mm standard operating gap • NC contact 	679976
	<p>DC127 Recessed mount contact, wired, press-fit</p> <ul style="list-style-type: none"> • 31mm wide operating gap • NC contact 	679977

Door and window contacts (continued)



	Description	Ref. No.
	DC120 Recessed mount contact wired, stubby press-fit <ul style="list-style-type: none"> • 18mm wide operating gap • NC contact 	679978
	DC105 Recessed mount contact, wired, bare magnet <ul style="list-style-type: none"> • 12mm standard operating gap • The DC105-contact with its small diameter (64mm) is ideal for NC contact 	679979
	MM108 Surface overhead - angle mount contact	679982
	MM115 Surface mount contact - wired	679984
	DC193 L-bracket for DC102, DC104, DC123, DC137	679985

Safety sensors



	Description	Ref. No.
	Sensors linked through input modules. Separate power supply needed (9-24V). Smoke sensors DP721R⁽¹⁾ Photoelectric smoke detector with field exchangeable optical chamber as well as a built-in relay for local switching applications <ul style="list-style-type: none"> • CO relay output 	679956
	DP721RT⁽¹⁾ Photoelectric heat and smoke detector <ul style="list-style-type: none"> • With field exchangeable optical chamber and local relay output facilities 	679957
	DP721RTA⁽¹⁾ Photoelectric smoke and heat detector with relay output, auto reset	679958
	DB702 Conventional fire detector base used for all 700 series conventional fire detectors. <ul style="list-style-type: none"> • Includes a normally closed continuity switch to allow easy cable testing during installation 	679997
	211 Replacement optical chamber for 700 series detectors	679996

(1) Please consult us.




Safety sensors (continued)

	Description	Ref. No.
	<p>Stand alone battery powered smoke detector</p> <p>562NSE</p> <ul style="list-style-type: none"> • With on board sounder • Local silence and test function • Full EN14604 approval • Self-diagnostics monitor sensitivity and operational status • Replaceable optical chamber for easy maintenance 	<p>679950</p>
	<p>Hazardous gas sensors</p> <p>FGT312CO</p> <p>Alarm</p> <ul style="list-style-type: none"> • 50 ppm (parts per million) 75 minutes • 100 ppm 25 minutes • > 300 ppm immediate 	<p>679963</p>
	<p>Flammable gas sensors</p> <p>FGE312LP</p> <p>LPG detector for domestic applications</p> <ul style="list-style-type: none"> • Alarm relay 12-24Vdc • Prealarm 5% LEL • Alarm 10% LEL 	<p>679959</p>
	<p>FGE330LP</p> <p>LPG detector for domestic applications</p> <ul style="list-style-type: none"> • Alarm relay, 230Vac • Prealarm 5% LEL • Alarm 10% LEL 	<p>679960</p>
	<p>FGE312ME</p> <p>Methane detector for domestic applications</p> <ul style="list-style-type: none"> • Alarm relay, 12-24Vdc 	<p>679961</p>
	<p>FGE330ME</p> <p>Methane detector for domestic applications</p> <ul style="list-style-type: none"> • Alarm relay, 230Vac 	<p>679962</p>
	<p>Glass break sensor</p> <p>GS930</p> <p>Acoustic glass break detector - 3x3 technology</p> <ul style="list-style-type: none"> • Semiconductor relay opens on alarm 	<p>679964</p>
	<p>GS905</p> <p>Handheld acoustic glass break tester with real glass break sounds</p> <ul style="list-style-type: none"> • Different settings depending on kind of glass to be protected 	<p>679965</p>
	<p>Sirens</p> <p>AS270</p> <p>Indoor siren, 1 tone - without flash</p>	<p>679994</p>
	<p>AS271</p> <p>Indoor siren, 1 tone - with flash</p>	<p>679995</p>

Safety accessories

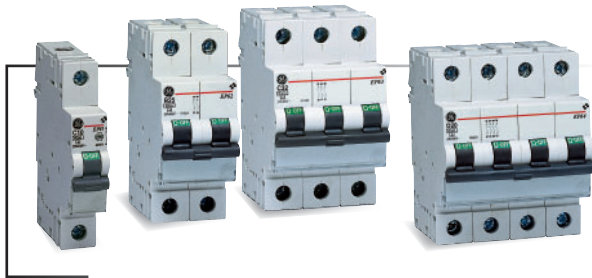
	Description	Ref. No.
	<p>Panic buttons</p> <p>HB191¹¹ Personal attack switch - single button • NC contact</p>	679986
	<p>HB194¹¹ The HB194 personal attack switch incorporates a mechanical double button • Supplied with a key reset</p>	679987

Third party accessories

	<p>Combined sensors CO₂, temperature and humidity -BUS connected</p> <p>AIR01CT Measures the CO₂ concentration and temperature in the living space. The value measured can be used by the controller to activate a valve of a ventilation system, open or close a window via a motor, etc. in order to optimally aerate the space.</p>	678999
	<p>AIR01CHT Measures the CO₂ concentration, temperature and humidity in the living space. The value measured can be used by the controller to activate a valve of a ventilation system, open or close a window via a motor, etc. in order to optimally aerate the space.</p>	679847
	<p>AIR01HT Measures the temperature and humidity in the living space. The value measured can be used by the controller in order to provide optimal room climate.</p>	679848
	<p>Constant light control dimmer - CLC01</p> <p>The CLC01 ensures the desired light level remains constant in every room by adapting the lighting to the intensity of the natural light. The CLC01 is supplied and controlled via the HabiTEQ two-wire bus. The required light level can be set with the HabiTEQ configuration software. A light sensor on the CLC01 continuously measures the light level. The difference between the desired and effective light level is adjusted by the CLC01 that dims the connected lighting to Maintain the light level in the room at the required level. A galvanic separation between the bus and the output guarantees its safe operation. The CLC01 has an adjustable output (via the System Manager Software): 0-10V (sourcing - max 5mA) or 1-10V (sinking - max 100mA) that can be connected to one or more lighting fixtures.</p>	679914
	<p>Shutter module - ROL02P</p> <p>ROL02P can be used to control and position shutters. This module is suitable for switching and positioning two 230 Vac shutter motors with limit switch contacts. Each shutter on the ROL02P can be positioned between 0% and 100% of the run time. An internal calibration mechanism will calibrate the shutter every time it is fully raised or lowered. This ensures the desired position of the shutter remains accurate over time.</p>	679842

(1) Please consult us.

To complete your distribution board GE presents a wide range of modular devices



MCBs

Miniature circuit breakers

From 0.5 to 125A - 1 to 4P configuration.
 From 3kA to 50kA breaking capacities.
 According to EN/IEC 60898-1 and EN/IEC 60947-2
 Unibis™ compact MCBs:
 2P in 1 module, 3 and 4P in 2 modules.
 Fixwell™ screwless MCBs 6 and 10kA.

RCCBs

Residual current operated circuit breakers without integral overcurrent protection

From 16 to 100A and 10mA to 1000mA.
 According to EN/IEC 61008-1 and BS EN 61008-1



RCBOs

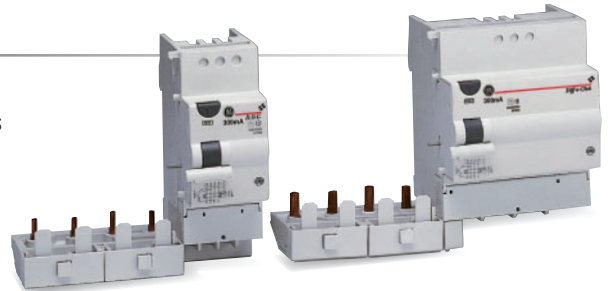
Residual current operated circuit breakers with integral overcurrent protection.

From 4 to 40A and 10mA to 300mA,
 1P+N. According to EN/IEC 61009-1

Add-on RCDs

Add-on residual current devices for MCBs

For 2 to 4 poles MCBs, 30 up to 1000mA.
 According to EN/IEC 61009-1



Energy control and comfort functions

Modular switches and push-buttons, impulse switches, contactors, time switches, time relays, transformers, measurement devices, surge arresters, ...

